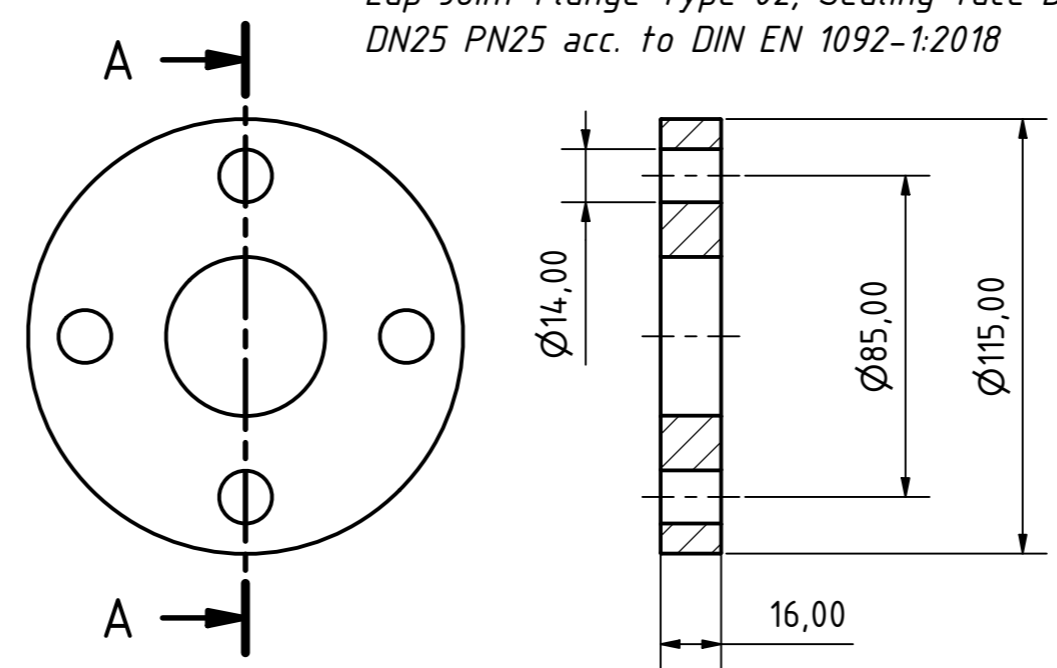
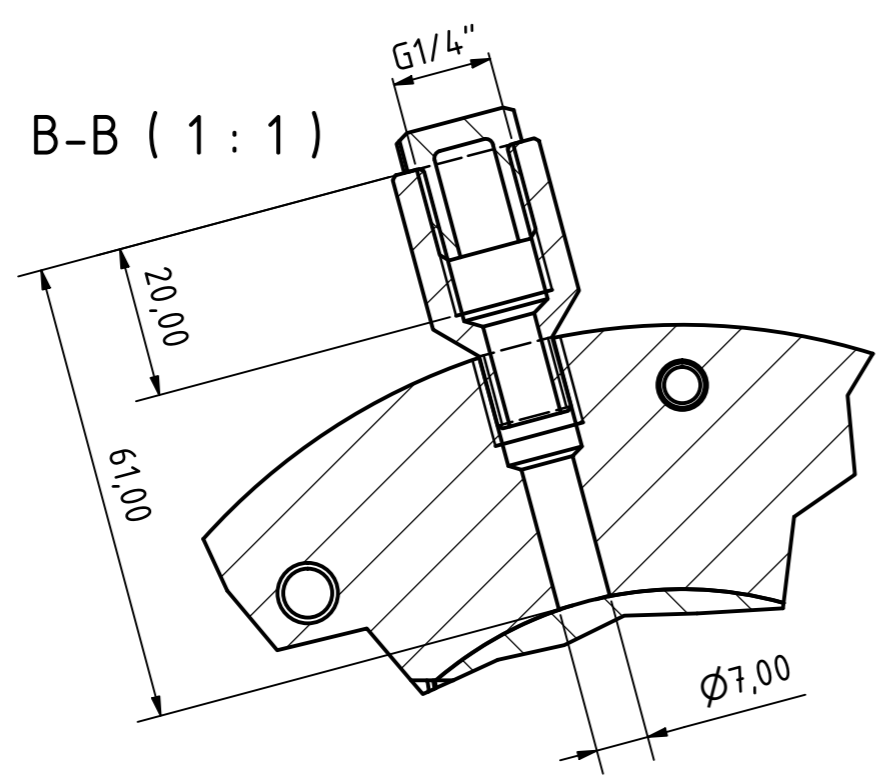
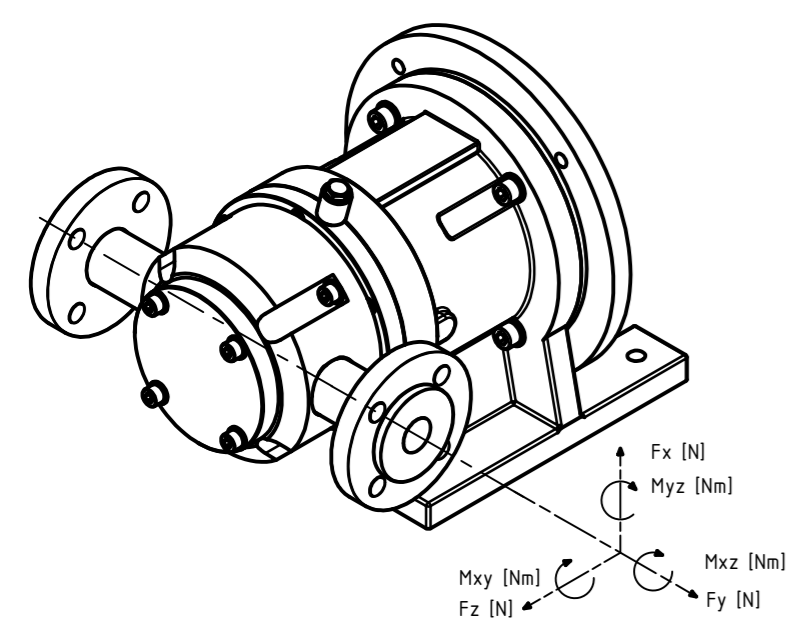
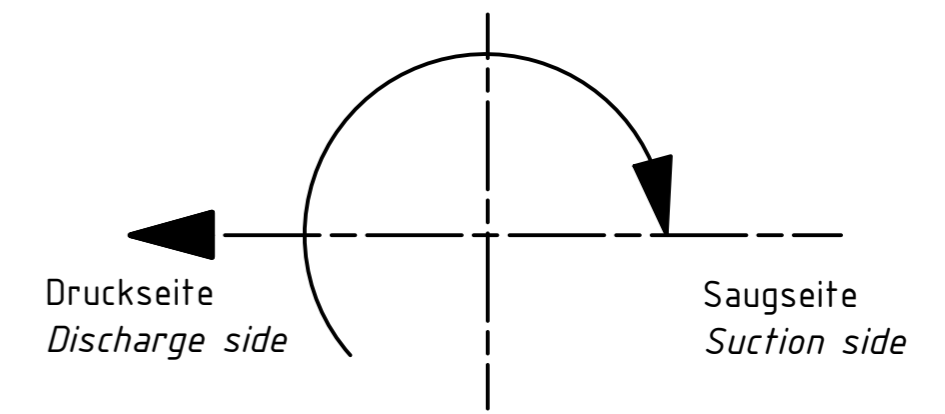


DN s/d A-A (1 : 2)
 Loser Flansch Typ 02, Dichtfläche B1,
 DN25 PN25 nach DIN EN 1092-1:2018
 Lap Joint Flange Type 02, Sealing-face B1,
 DN25 PN25 acc. to DIN EN 1092-1:2018

Anschluss (blind) für
 Widerstandsthermometer
 Nozzle (blind) for
 resistance thermometer



Drehrichtung
 Direction of rotation



Tabelle

Series	Fx [N]	Fy [N]	Fz [N]	Myz [Nm]	Mxy [Nm]	Mxz [Nm]
MPA I° R (114 - 514)	260	320	260	140	140	150
MPA II° R (614 - 1014)	300	360	300	180	180	190
MPA III° R (1014 - 2414)	380	440	380	230	230	240

Alle Angaben unverbindlich, technische Änderungen vorbehalten! Technical data not binding and subject to change!
 Copyright MARCH PUMPEN GmbH & Co.KG 2022

MARCH PUMPEN
 Rätthausstraße 2
 D-35394 Gießen
 Tel.: (+49) (0)641-686806-0
 Fax.: (+49) (0)641-686806-60

Datum: 13.06.2022
 Name: Lach

1:2

Pump weight: 65kg

VANE-MAG MPAlII.2G Range
 SSF - IEC100 - HEW Ex db

DPMPA-2014.2-S_-F-407508-DK-HEW

Status: Änderungen Datum Name